

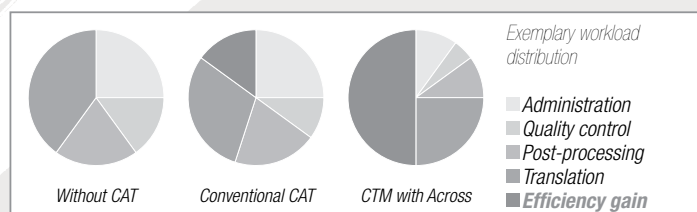
Corporate Translation Management

A one-stop client/server-based solution for translators, project managers and customers

Corporate Translation Management is the next generation solution for managing the full multilingual documentation cycle, from drafting texts to translating and publishing same in any DTP format.

This technology and methodology allows customers and the chain of suppliers to interact on a single project, sharing workflows and the large quantity of data generated by the drafting, translation and DTP processes. This data multiplies with each language version produced, and increases with every amendment to be implemented as part of the translation or reviewing process (the latter, either requested by the customer or based on the EN 15038 standard), or as a result of proofing documents to be published and printed. This data needs to be managed rapidly, to avoid a setback in the launch of a product due to a delay in the production of the language documentation.

Exemplary workload distribution. Substantial efficiency gain with CTM, thanks to the integrative approach of Across.

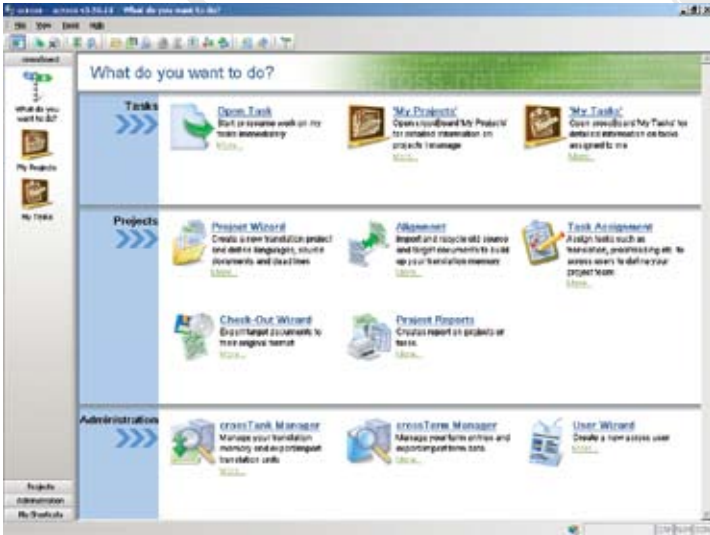




Across Language Server: the CTM used by SOGET

The Across Language Server manages the entire workflow and allows the customer to delegate entire projects or single activities (a translation or revision, etc.) to SOGET, while maintaining control and monitoring progress. SOGET's and the customer's Across Language Servers form a single network, with safe, controlled VPN access. *CrossGrid*, one of the system's modules, allows the customer to configure its server as Master, authorising SOGET to connect to same and perform the necessary tasks.

Furthermore, in the event of not availing of a translator capable of working from a specific source language, then it becomes necessary to work through another (relay) language; in this way, the translator, by accessing a centralised memory, can work at the same time as the intermediate translator, thus submitting the final translation almost at the same time as those working directly on the other languages. The growing complexity of the products and shorter time-to-market schedules result in faster change cycles for marketing documents, manuals, graphical user interfaces, and service literature. Thus, the project management often consumes just as much time and money as the actual translation. Task assignment, scheduling, workflow control, quality assurance, versioning, and transparent reporting are just some of the comprehensive, seamlessly integrated project management functionalities Across offers in addition to the actual translation support.



Networking

Across offers a variety of connectivity options such as access to the server from the internal network, access over the Internet by means of WAN clients, server-to-server connections with *CrossGrid*, and browser-only access to *CrossTerm Web*. Moreover, a wide range of interfaces can be used to connect Across seamlessly to upstream and downstream systems, e.g. for data exchange with editorial, CMS, or catalog systems, for translation-oriented authoring with various source text editors, or as a repository for special software localization tools.

Translation support

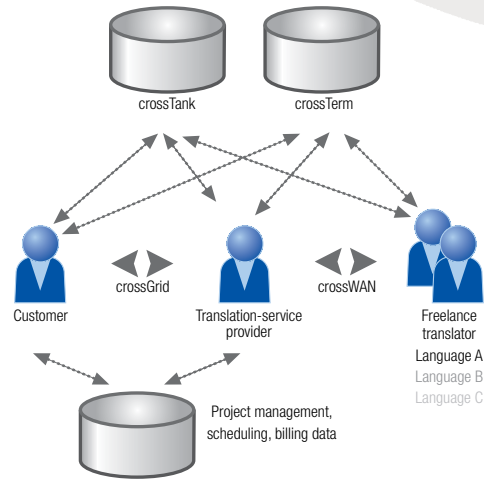
The idea of supporting professional translators with specialised software is not a new concept. For many years now, SOGET has been managing translation projects using leading CAT (Computer-Aided Translation) products, which function on the basis of translation memories, termbases, and editors featuring various characteristics and technological components. CAT software is a fundamental aspect of the Across Language Server, enhanced through integration with other important functions.

Translation memories archive existing translations as sentence pairs, in the source and target language, and offer them up for future translations. The terminology system ensures the use of appropriate corporate terminology, which constitutes a key aspect of corporate identity. Translators and revisors work on a universal editor capable of managing all the main text and DTP formats, thus enabling them to concentrate on the essence of their task rather than waste time on the specific aspects of Word or FrameMaker, or of XML or HTML formats.

Project management

Translations often require teamwork. SOGET relies on a number of people to exchange the necessary material and information and coordinate projects: project managers, translators, revisors, proofreaders and DTP operators, not to mention its customers, dealing directly with their sales managers and technicians.

Translating a document into 20 languages involves at least as many mother tongue professionals, and may, based on the principle that "two heads are better than one" – recently implemented by the UNI EN 15038 standard - involve just as many revisors. These professionals often don't work in the same office, and indeed can live in the furthest flung corners of the globe.



Instant integration!

If your company already uses an Across Language Server, SOGET is ready to manage any project through *crossGrid*. If you wish to install an Across Language Server and avail of the advantages of CTM and CAT, SOGET can offer the experience of a consolidated partnership.

Finally, if your company wishes to migrate from another software to the Across Language Server, SOGET has perfected the services required to start using the Across Language Server, safeguarding previous investments and existing corporate literature:

- Collection of translated documents for which a translation memory has not yet been created (known as alignment);
- Extraction and validation of terminology;
- Importation and consolidation of TMX files (Translation Memory Exchange);
- Conversion from other translation memories (Trados®, Transit®, DéjàVu®, etc.).

